





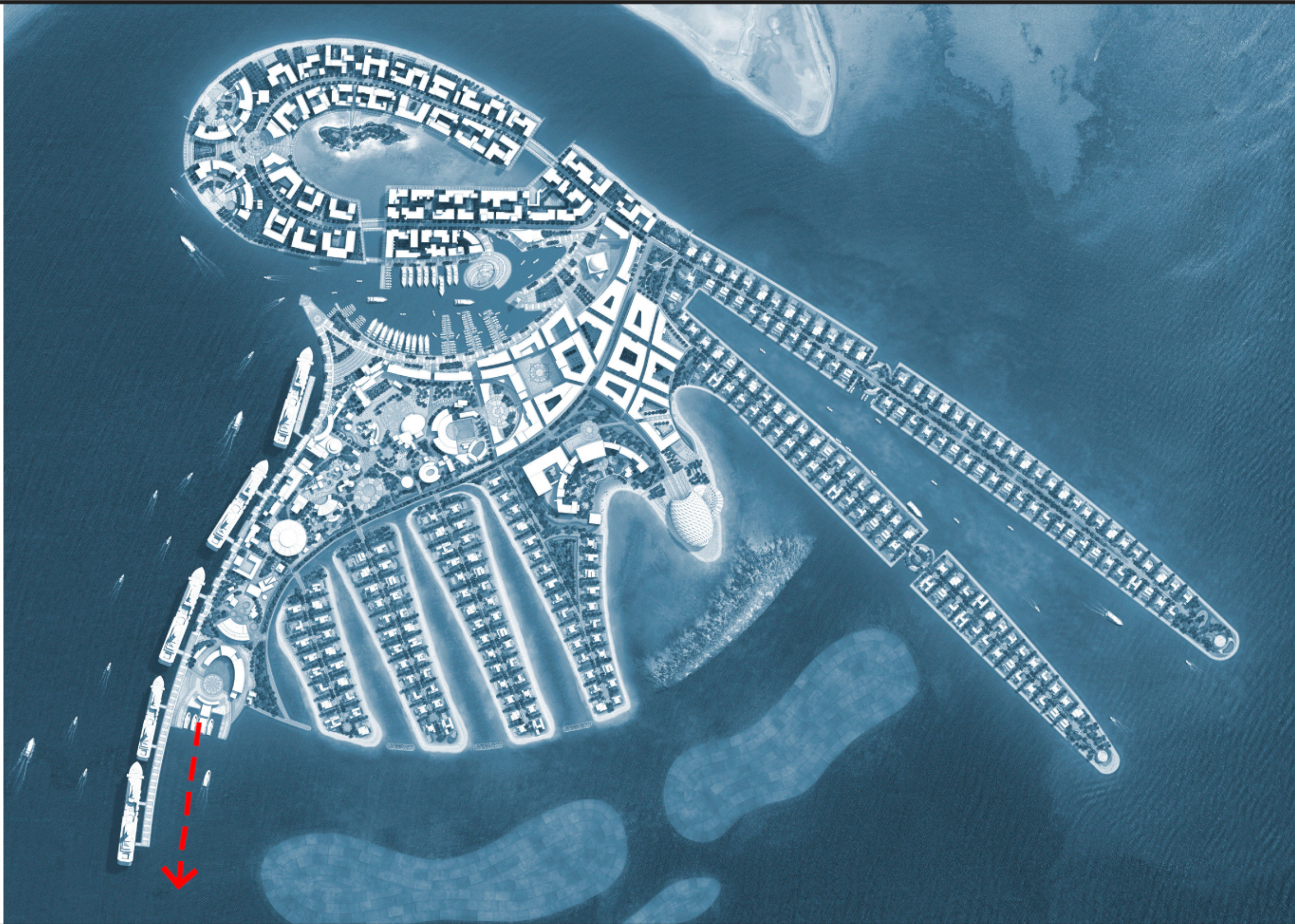
ISLAND LANDMARKS

The skyline of Oryx Island is to be both animated and inhabited. There are three main special landmark buildings on Oryx Island that help achieve this goal: the iconic ferry restaurant, the marine college and the open-air theater pavilion. These special landmark buildings punctuate the cityscape, playing an important role in achieving a balance between diversity and cohesion, as well as between formality and informality. These innovative landmark elements are crafted in an overall composition to achieve an exciting and memorable cityscape.



WATER TAXI & HARBOR MASTER STATION

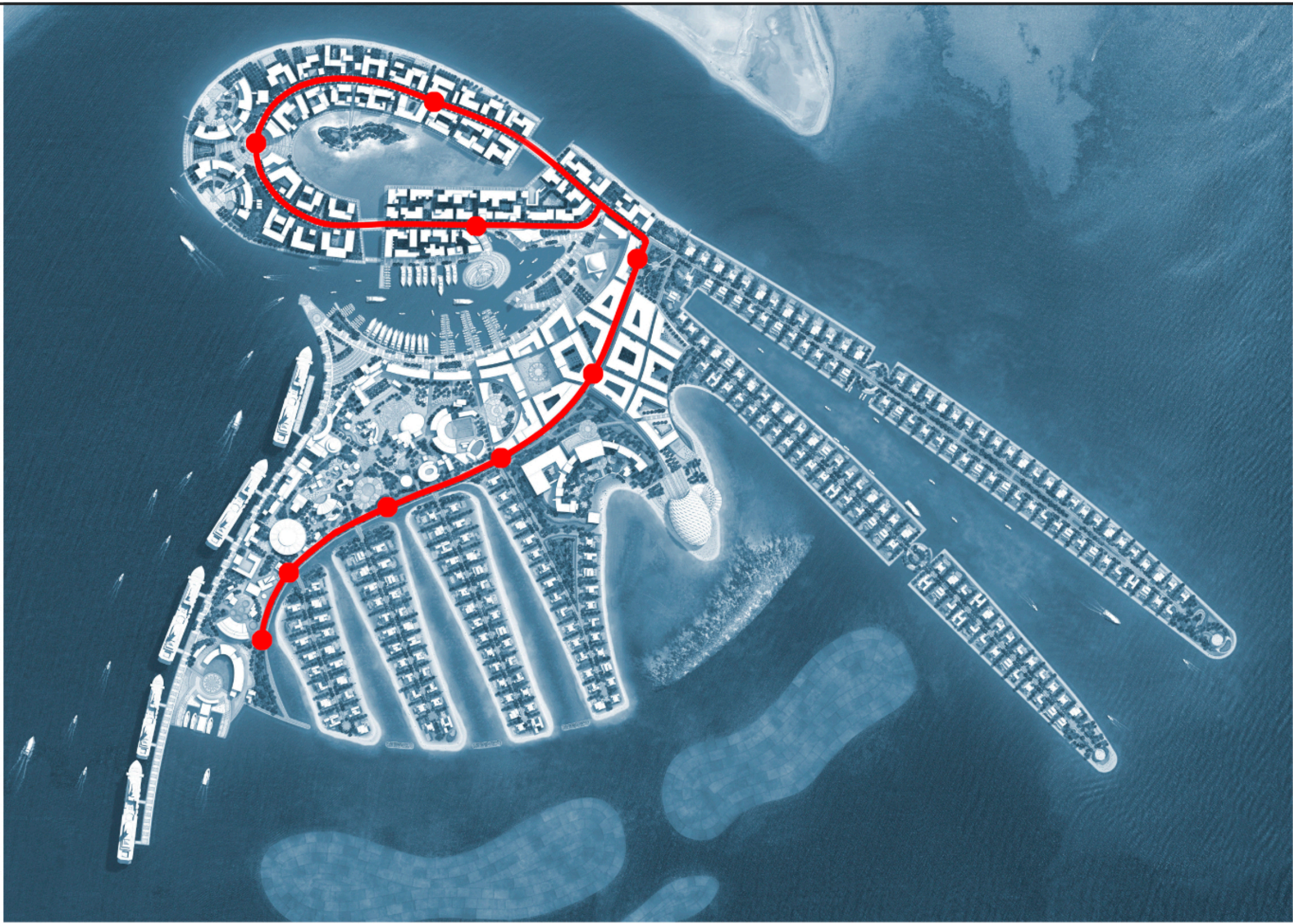
The focal point for commercial and leisure travel to Oryx Island will be the Water Taxi & Harbor Master Station. Regular water shuttles will run between Oryx Island and docking points in Doha. The Water Taxi and Harbor master Station will contain a dramatic second level restaurant which will provide views of approaching and departing water taxis. The lower level will contain visitor information and act as a “gateway” to Doha and to Oryx Island.



TRANSPORTATION STRATEGY

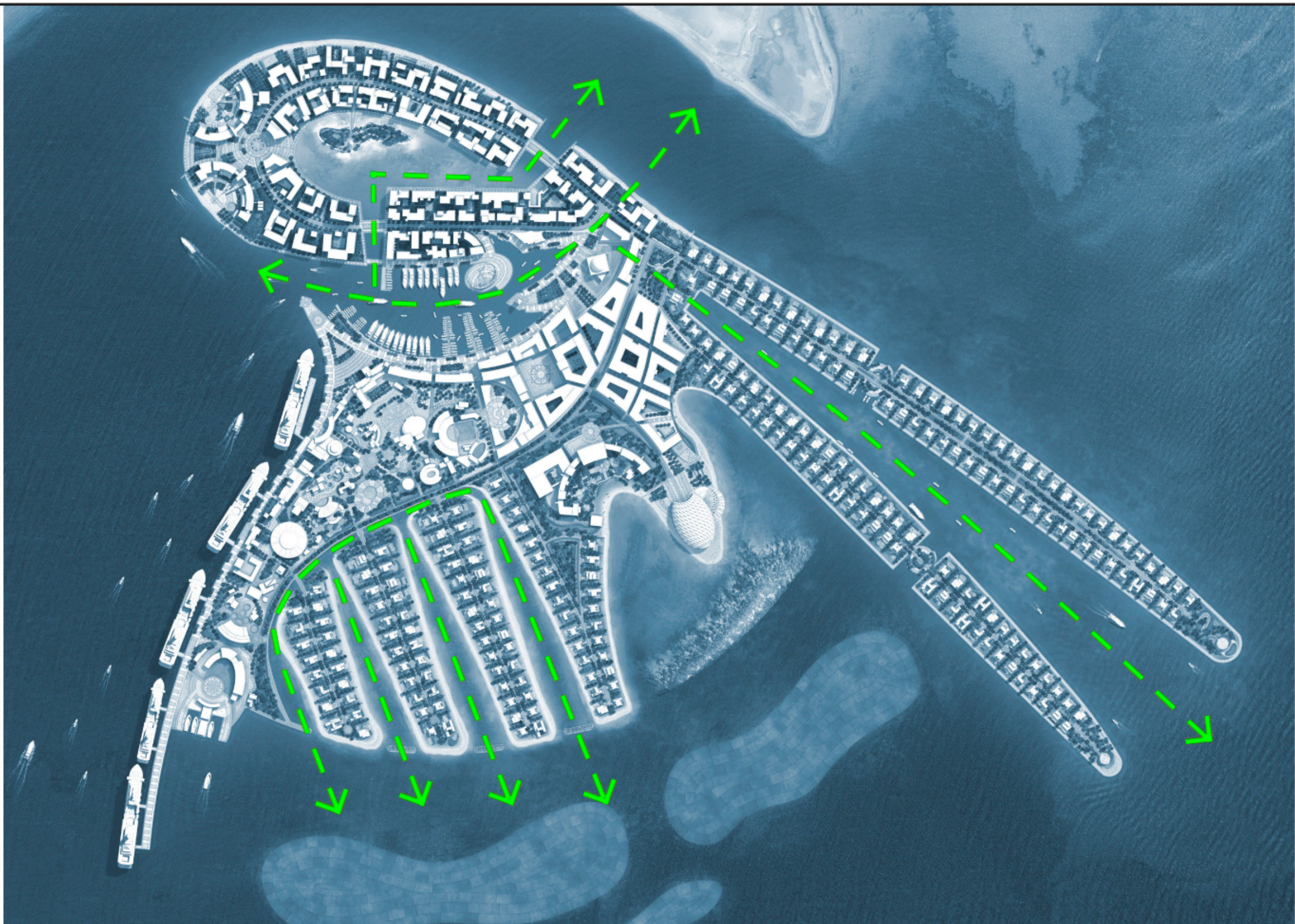
The main transportation strategy around the Island will be provided by a dedicated “monorail loop” the monorail is envisioned to provide transport primarily on ground level but may be raised above ground in certain areas to reduce pedestrian conflicts or provide views of surrounding activity on Oryx Island and long distance views of the Arabian Gulf.

The monorail starts and terminates at the Harbor Master Station and runs along the Water Park / Theme Park. Through the commercial district, past the Main Mosque and circles around the Seaside and marina Apartments before returning to the Harbor Master Station. The monorail provides convenient access to all three hotel properties on Oryx Island as well as the Theater Pavilion.



WATER MOVEMENT / WATER QUALITY

It is important to assess the environmental conditions of Oryx Island based on marine field surveys and numerical modeling of flow and wave conditions. This should also be considered when determining the final location of the island. To ensure good water quality, seawater must flow in canals and coves between the deepest inlet areas and the open sea.







ICONIC FERRY RESTAURANT

